



## Shirley Ann Watford

February 22, 1950 - September 27, 2016

Shirley Ann Binder Watford (66) of Ahoskie, NC departed this earthly life September 27, 2016 in Newport News, VA. She was born on February 22, 1950 to the late Alfred and Baby Ray Patton Binder in Mobile, AL.

She was a member of New Holley Grove Missionary Baptist Church. She retired from Hertford County Schools as a teacher assistant.

Shirley leaves to cherish precious memories: her husband of 43 years, Willie Watford of the home; (3) daughters, Nicole Watford of Newport News, VA, Dana Kinlaw of Ahoskie, NC and Jessica A. Watford of Richmond, VA; (1) son, Willie Watford of Atlanta, GA; (2) brothers, Alfred Binder of Montgomery, AL and Alfrado Binder of Mobile, AL; (5) grandchildren; a host of other relatives and friends.

# Previous Events

## Service

OCT 3. 11:00 AM (ET)

New Holley Grove Baptist Church  
334 Glovers Gross Rd  
Colerain, NC 27924

# Tribute Wall



“ I was so shocked and saddened by the death of my friend and co-worker, Shirley Watford. My heart is so heavy. We shared so many happy times at C. S. Brown. Everyone was one big happy family. My sincere condolences to the Watford family as you continue to celebrate the life and memories of our dear Shirley. She will be greatly missed. She had a smile that lit up the world. May she rest in peace...no more pain or suffering.



Linda Vinson - October 05, 2016 at 06:14 PM



“ I was so shocked and saddened by the death of my friend and co-worker, Shirley Watford. My heart is so heavy. We shared so many happy times at C. S. Brown. Everyone was one big happy family. My sincere condolences to the Watford family as you continue to celebrate the life and memories of our dear Shirley. She will be greatly missed. She had a smile that lit up the world. May she rest in peace...no more pain or suffering.



Linda Vinson - October 05, 2016 at 06:12 PM



Thank you Mrs Vinson!  
Jessica

J Alex Watts - October 06, 2016 at 01:32 PM

ER

“ *Evangelist Roosevelt Robbins lit a candle in memory of Shirley Ann Watford*



---

**Evangelist Roosevelt Robbins** - October 04, 2016 at 04:47 PM

CW

“ *Cathy Wilkins lit a candle in memory of Shirley Ann Watford*



---

**Cathy Wilkins** - October 02, 2016 at 08:29 PM

AW

“ *Adell Warren lit a candle in memory of Shirley Ann Watford*

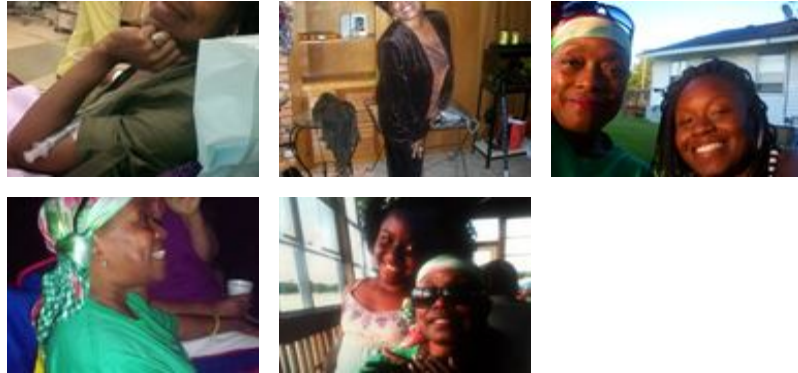


---

**Adell Warren** - October 02, 2016 at 12:59 PM



“ 22 files added to the album Life Tributes



Hunter's Funeral Home - October 02, 2016 at 12:10 PM

CS

“ My condolences to the family Mrs. Watford was a sweet kind hearted person. My mother the late Montrose J Hall worked with her at C S Brown.

Charmont Stephen - October 01, 2016 at 12:52 PM

TS

“ Your memory, love, and strength will be remembered in the way you loved your family and your ability to stay positive through it all. Your family is proof that you were here. God has an angel in you.



Tomeka Smith - October 01, 2016 at 12:47 PM

SF

“ Sabrina Freeman lit a candle in memory of Shirley Ann Watford



---

Sabrina Freeman - September 30, 2016 at 09:26 AM

RS

“ Rodney, Bob, Sharon, Timothy And Sideah lit a candle in memory of Shirley Ann Watford



---

Rodney, Bob, Sharon, Timothy and Sideah - September 30, 2016 at 09:14 AM

ER

“ My prayers are with you!

---

Evangelist Roosevelt Robbins - September 29, 2016 at 08:47 PM

JT

“ Joyce Tann lit a candle in memory of Shirley Ann Watford



---

Joyce Tann - September 29, 2016 at 05:10 PM

MN

“ *Matthew&Saundra Holmes Pennsauken NJ. purchased the Divine Peace Bouquet for the family of Shirley Ann Watford.*



---

**Matthew&Saundra Holmes Pennsauken NJ.** - September 29, 2016 at 11:14 AM

CC

“ *Carolyn Chavis-Bond lit a candle in memory of Shirley Ann Watford*



---

**Carolyn Chavis-Bond** - September 29, 2016 at 09:54 AM

MH

“ *We share our profound sympathy with the Watford family Shirley was our sister and we will love her always. God bless Willie and the Watford and Binder families. Matthew and Saundra Holmes and family Pennsauken NJ*



---

**Matthew Holmes** - September 29, 2016 at 09:45 AM

JB

“ *Judy Boone lit a candle in memory of Shirley Ann Watford*



---

**Judy Boone** - September 28, 2016 at 04:11 PM

JB

*Sending my sincere condolences to Willie and family, Shirley worked with us at CS Brown Elementary when you all moved here. "Weeping Endure for a Night but Joy comes in the morning."*

**Judy Boone** - September 28, 2016 at 04:13 PM

RS

*Willie and family our hearts are with you all. Shirley was just beautiful, inside and out and that smile. Be strong and know that she is part of you so she will be with you always. Love you all*

**Rodney, Bob, Sharon, Timothy and Sideah** - September 30, 2016 at 09:20 AM

RS

*Bob too*

**Rodney, Bob, Sharon, Timothy and Sideah** - September 30, 2016 at 10:08 AM